

# Titan

by Glaval Bus

## STRENGTH AND GOOD LOOKS

With a solid reputation for both quality and dependability, the TITAN II has quickly become an industry leader in the commercial bus market. Built on the Chevy chassis, the TITAN II is available with either the 6.0L gas or 6.6L diesel engine. With a variety of floor plans available, the TITAN II can seat up to 25 passengers making it versatile enough to meet almost any of your transportation needs. Matched with the galvanized 'Steel-Safe' construction, the Glaval Titan II is sure to deliver.

# OVERLAND

CUSTOM COACH (2007) INC.



Unit shown with optional features

**WWW.OVERLANDCUSTOMCOACH.COM**  
**519-461-1140 FAX: 519-461-0523**

## STANDARD CHASSIS FEATURES

	Gas 3500	Diesel 3500	Gas 4500	Diesel 4500
<b>Engine</b>	6.0L Gas Vortec V-8; VTM Hybrid Available and CNG Option	6.6L Duramax Diesel; VTM Hybrid Available	6.0L Gas Vortec V-8; VTM Hybrid Available and CNG Option	6.6L Duramax Diesel; VTM Hybrid Available
<b>Power</b>	324hp; 375lb-ft	260hp; 525lb-ft	324hp; 373lb-ft	260hp; 525lb-ft
<b>GVWR</b>	12,300	12,300	14,200	14,200
<b>Alternator</b>	Single 145 Amp	Dual 145 Amp	Single 145 Amp	Dual 145 Amp
<b>Fuel System</b>	33 Gallons	33 Gallons	57 Gallons	57 Gallons
<b>Alternate Fuel</b>	---	B-20 Capable	---	B-20 Capable
<b>Transmission</b>	6 Speed	6 Speed	6 Speed	6 Speed
<b>Parking Brake</b>	Foot-Operated, Hand Release	Foot-Operated, Hand Release	Foot-Operated, Hand Release	Foot-Operated, Hand Release
<b>Wipers</b>	Intermittent	Intermittent	Intermittent	Intermittent
<b>Battery</b>	Dual Batteries	Dual Batteries	Dual Batteries	Dual Batteries
<b>Cruise Control</b>	Standard	Standard	Standard	Standard
<b>Fast Idle</b>	Standard	Standard	Standard	Standard
<b>Power Steering</b>	Standard	Standard	Standard	Standard
<b>Tilt Steering</b>	Standard	Standard	Standard	Standard
<b>Wheels</b>	White, Dual Rear Wheels	White, Dual Rear Wheels	White, Dual Rear Wheels	White, Dual Rear Wheels
<b>Tires</b>	Wide Profile Radial	Wide Profile Radial	Wide Profile Radial	Wide Profile Radial
<b>Head Lamps</b>	Halogen Aero	Halogen Aero	Halogen Aero	Halogen Aero
<b>Horn</b>	Dual Electric	Dual Electric	Dual Electric	Dual Electric
<b>Running Lights</b>	Daytime	Daytime	Daytime	Daytime
<b>Brakes</b>	Front & Rear Disc	Front & Rear Disc	Front & Rear Disc	Front & Rear Disc
<b>Anti-Lock</b>	4-Wheel	4-Wheel	4-Wheel	4-Wheel
<b>Stereo</b>	AM/FM/CD w/ 4 Speakers	AM/FM/CD w/ 4 Speakers	AM/FM/CD w/ 4 Speakers	AM/FM/CD w/ 4 Speakers
<b>Front Bumper/Grill</b>	Chrome	Chrome	Chrome	Chrome
<b>Air Conditioner</b>	Automotive	Automotive	Automotive	Automotive
<b>Rear Stabilizer Bar</b>	Standard	Standard	Standard	Standard
<b>Driver's Seat</b>	OEM	OEM	OEM	OEM
<b>Exhaust</b>	Rear Routed; Aluminized Steel	Rear Routed; Aluminized Steel	Rear Routed; Aluminized Steel	Rear Routed; Aluminized Steel
<b>Engine Shutdown/Alarm</b>	Standard	Standard	Standard	Standard

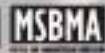
# OVERLAND

CUSTOM COACH (2007) INC.

RR#2, 21051 MISSOURI RD THORNDALE, ON N0M 2P0  
 519-461-1140 FAX: 519-461-0523  
 WWW.OVERLANDCUSTOMCOACH.COM



Dual Door Cab with Co-Pilot Seat



ISO 9001 2008 certified

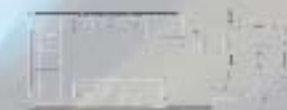
## MODEL SPECIFICATIONS

\* All Measurements Approximate

Chassis	Chevy Cutaway
<b>Wheelbase</b>	139"/159"/182"/190"
<b>Front Axle Rating</b>	4,000#
<b>Rear Axle Rating</b>	8,000#/9,600#
<b>Overall Length (Bumper to Bumper)</b>	21'/22'/23'/24'/26'
<b>Overall Width</b>	96"
<b>Overall Height (Excludes Escape Hatch or Roof A/C)</b>	114"
<b>Front Overhang</b>	38"
<b>Interior Height</b>	78"
<b>Interior Width</b>	92"
<b>Aisle Width</b>	18"
<b>Clear Door Opening</b>	30"
<b>Floor Height from Ground</b>	26 1/2"
<b>Ground to First Step</b>	11"
<b>Step Rise</b>	9 5/8"
<b>Step Tread</b>	12"
<b>Step Width</b>	34"

### STANDARD CONVERSION FEATURES

- "Steel-Safe" Constructed Floor, Roof and Sidewalls
- Galvanized Steel Floor Frame
- Galvanized Steel Stepwell
- Galvanized, All Structure
- 5/8" Treated Marine Grade Plywood Flooring
- Gray Koroseal Commercial Flooring w/Ribbed Aisle Cove Molding
- Vacuum Laminated Construction, Side and Rear
- Fiberglass Front Cap & 5-Piece ABS Rear Cap
- Fiberglass Composite Roof
- T-Slide Windows
- Full View Curb Window
- Electric Panel w/ Diagnostic Fuses
- LED Stepwell Lights
- Vinyl Clad Lauan Ceiling & Interior Sidewalls
- Track Seating
- Curb side Entrance Modesty Panel & Stanchion
- Rear Center Brake Light (Incandescent)
- Rear Mud Shield
- Steel Rear Bumper (Powder Coated)
- Window Drip Rails
- Exterior Rub Rails
- White Exterior
- Foamed In-Place Roof Insulation
- Front End Alignment (Toe-In, Toe Out)
- Under-Coating with Warranty



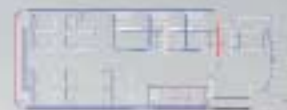
22', 14 Passengers, Perimeter Seating



22', No Lift, 14 Passengers w/Rear Luggage



24', Rear Lift, 12 Passengers w/2 Wheelchairs



24', Front Lift, 16 Passengers



26', Rear Lift, 10 Passenger w/4 Wheelchairs



26', 21 Passengers

### Paratransit Options

- Includes a single door, lift, park interlock, ADA Sign, Door Activated Lift and Entrance Lighting, Rear Exhaust (Rear or Roadside Exhaust required for Rear Lift)

### Chassis Options

- Stainless steel snap on wheel covers
- Teima Retarder
- Rear Tow Hook
- Exhaust, Rear
- VTM Hybrid Assist System
- Granning Rear Air Ride Suspension
- Kelderman Rear Air Ride Suspension
- Mor/Ryde Rear Suspension
- CNG option

## 5 YEAR/100,000 MILE LIMITED WARRANTY

SPECIFICATIONS AND OPTIONS ARE SUBJECT TO CHANGE WITHOUT NOTICE.